

CERTIFICATE OF LOCATION OF GOVERNMENT CORNER

NORTHEAST Corner of Section 2, Township 107N, Range 39W

5th Principal Meridian, State of Minnesota, County of MURRAY

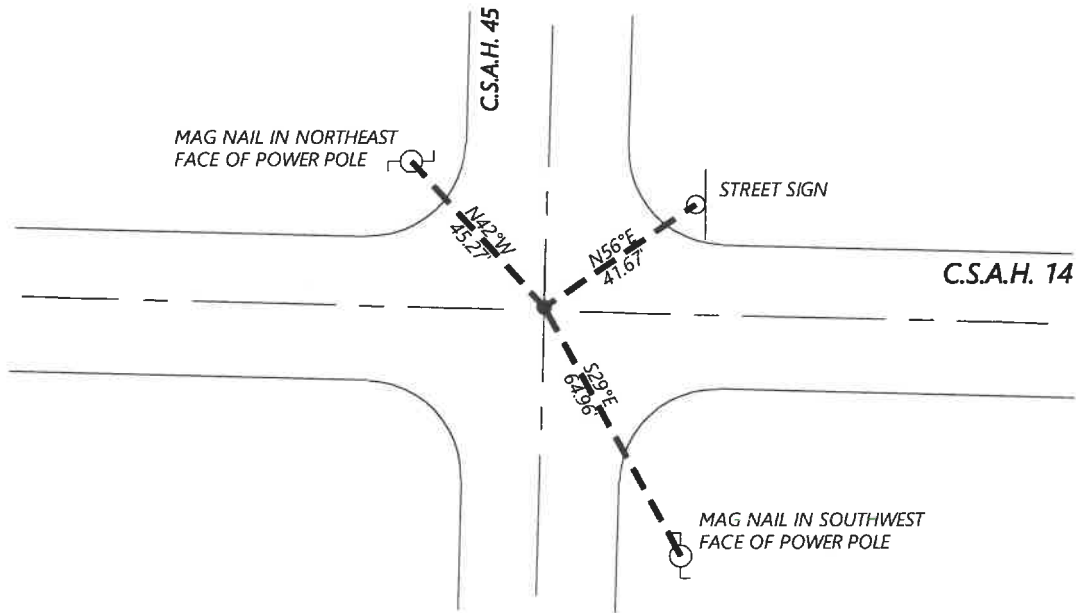
At the corner location shown on the sketch:

On 11/04/2020 found a 6" X 6" CONCRETE MONUMENT WITH SCRIBED "X" ON TOP, DOWN 1FT
DATE

left monument as found lowered monument removed monument (explain)

On 12/16/2020 placed a NO. 4 REBAR WITH CAP LS 45874, 0.5FT BELOW GRADE
DATE

SKETCH OF REFERENCE TIES



N.T.S.

Statement of evidence for this corner location is on back of this page.

I hereby certify that this document was researched and prepared by me or under my direct supervision and that I am a licensed Land Surveyor under the laws of the State of Minnesota.

Signature [Handwritten Signature]

Date 6/16/2021 License No. 45874

Title:

- Land Surveyor Professional Engineer
- County Surveyor County Engineer

OFFICE OF THE COUNTY RECORDER

County of Murray

I hereby certify that this document was filed in the Co.

Recorder's office at _____ M. on the _____ day of _____ A.D. 20

County Recorder Haven Brown

by JUN 22 2021, Deputy

DOCUMENT NO. _____

Statement of Evidence:

Northeast Corner of Section 2, Township 107 North, Range 39 West, 5th Principal Meridian, Murray County, Minnesota.

No GLO Notes.

1899 *October, Survey record for Section 1 shows a stone at the corner.*

1940 *Survey record for Section 1 shows a concrete stone at the corner.*

Tack in corner post NW 46.7ft

Tack in corner post NE 51.3ft

2012 *December, A survey in Section 2 by Perry Zieske shows a found iron monument at the corner.*

2020 *December, Westwood Professional Services did not find the iron monument from the 2012 Zieske survey. I excavated with a backhoe and found a 6"x6" concrete monument 1ft below road grade. I set a ½" rebar with cap LS 45874 above concrete monument, 0.5ft below grade, and set reference ties.*

Analysis of the recovered data, field evidence and survey measurements, indicates that the monument found is the correct perpetuation of this corner. For additional information concerning this corner please contact Westwood Professional Services.